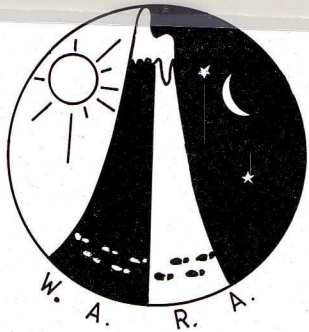


BOONERRING HILL WINTER STATE CHAMPIONSHIPS JUNE 5 & 6 1993



LEGEND

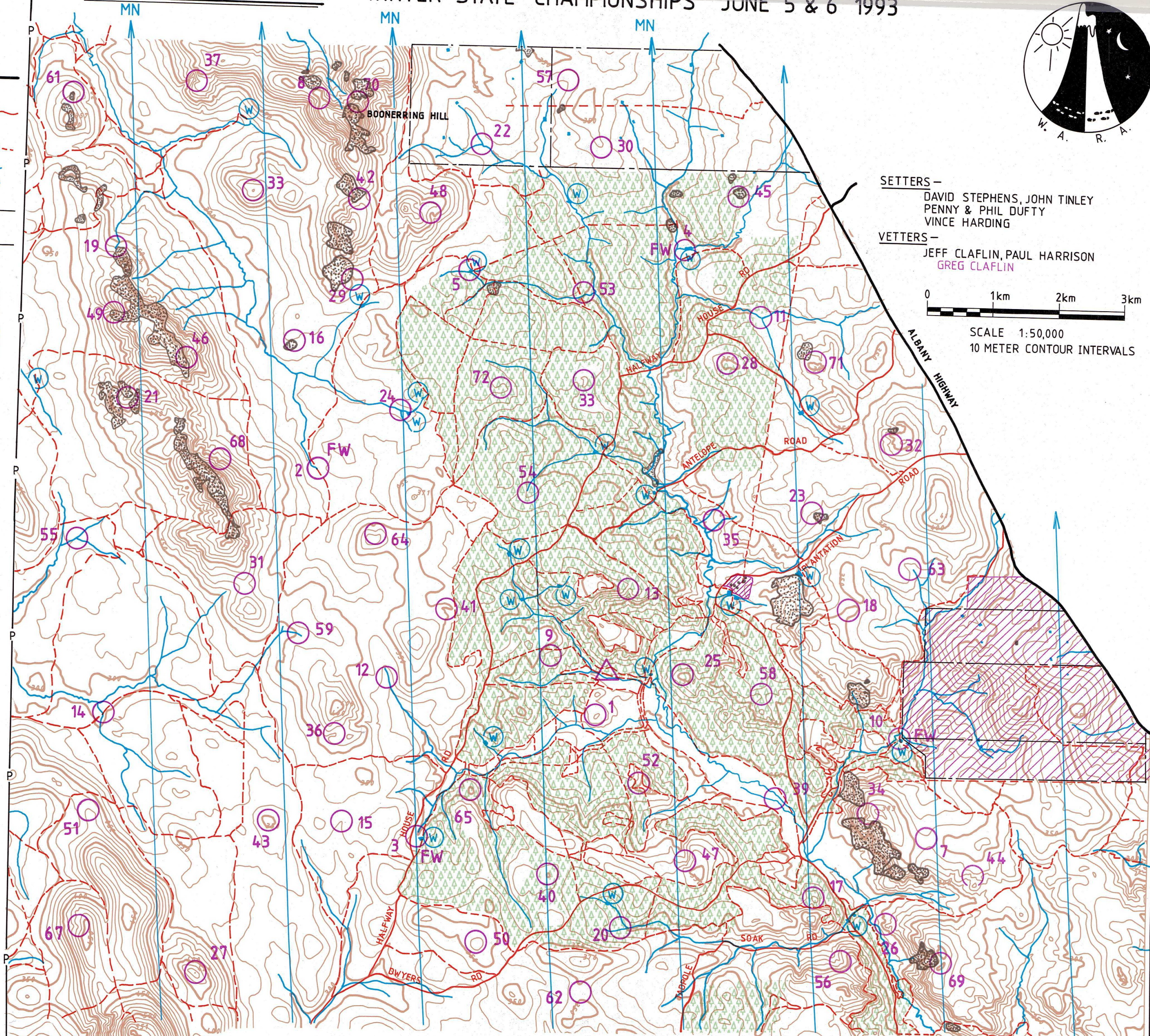
- SEALED ROAD
- GRAVEL ROAD - MAJOR
- MINOR
- WATER COURSE
- S.E.C. POWER LINE
- FENCE
- BUILDING
- PINE PLANTATION
- OUT OF BOUNDS
- CONTROL
- HASHHOUSE
- WATER
- FRUIT & WATER
- DAM
- CONTOUR
- BARE ROCK SURFACE

SETTERS -
 DAVID STEPHENS, JOHN TINLEY
 PENNY & PHIL DUFTY
 VINCE HARDING

VETTERS -
 JEFF CLAFLIN, PAUL HARRISON
 GREG CLAFLIN



SCALE 1:50,000
 10 METER CONTOUR INTERVALS



BUNNINGS
TREEFARMS

THIS MAP IS COMPILED & DRAWN BY VINCE HARDING USING MAPS & PHOTOS FROM CALM & BUNNING TREE FARMS. CONTOURS SUPPLIED BY CALM.
 THIS EVENT IS ON LAND OWNED & MANAGED BY BUNNING TREE FARMS, CALM & VARIOUS LAND OWNERS - PLEASE RESPECT THE KINDNESS EXTENDED TO OUR SPORT.

Cont No	Description	Points
		10
1	A knoll	10
2	Track/water course crossing	Fruit & Water
3	South/east corner of dam	Fruit & Water
4	Southern end of dam wall	Fruit & Water
5	The dam - western side	20
7	Broad saddle - on a track	20
8	A saddle	20
9	In the gully	20
10	North corner of dam	Fruit & Water
11	A water course junction	20
12	In the gully	30
13	The gully	30
14	Track/water course junction	30
15	On the track	30
16	N/E edge of 100 metre bare rock surface	30
17	The knoll	30
18	A broad knoll	30
19	Head of water course	30
20	South side of creek junction	30
21	The spur - in a rocky clearing 30 x 30 m	30
22	The water course junction	30
23	Head of gully	30
24	The indistinct water course junction	40
25	The summit	40
26	The spur	40
27	The summit	40
28	The broad summit	40
29	A water course junction	40
30	The broad saddle	50
31	The saddle	50
32	A gully	50
33	The Summit	50
34	Head of the gully	50
35	The spur	50
36	In the gully	50
37	Head of a gully	50
38	The summit	50
39	On the track	50
40	The knoll	50
41	Eastern side of bare rock surface	60
42	Head of gully - south edge bare rock surface	60
43	The summit	60
44	Head of a gully	60
45	South edge of bare rock surface	60
46	Head of gully - east side of rocky outcrop	60
47	Head of the gully	60
48	The gully	70
49	The gully	70
50	The summit	70
51	End of the spur	70
52	A knoll	70
53	North side of water course bend	70
54	Head of the water course	80
55	The creek junction	80
56	Head of a gully	80
57	The shallow gully	80
58	The saddle	80
59	In an indistinct water course	90
61	The rocky spur	90
62	The saddle	90
63	The water course	90
64	Head of the gully	90
65	The knoll	100
67	Head of the gully	100
68	Bottom of the gully	100
69	A knoll	100
70	The saddle	100
71	A gully	100
72	A knoll - on 2 metre high pile of rock	100